

# Serving Sizer™ v1.01



## User's Guide

Copyright © 2004 Creative Algorithms, LLC

# Table of Contents

Introduction.....	1
Software License.....	1
Trial Period.....	1
Using Serving Sizer™.....	2
Drop-down Menu Items.....	3
Registering.....	4
Sharing the Program.....	5
Beaming the Program.....	5
Emailing the Program.....	5

## Introduction

Serving Sizer™ is a calculator for multiplying and estimating recipe ingredients. It converts recipe ingredients to alternative serving sizes and proportions. It also converts US weights and measures (cups, pints, lbs, etc...) to and from Metric system equivalents (ml, grams, etc...). Supports PalmOS® 2.0 and higher (including 5.0).

PalmOS and HotSync are registered trademarks of Palm, Inc. Palm is a trademark of Palm, Inc. Windows is a trademark of Microsoft Corp. Macintosh is a registered trademark of Apple Computer, Inc. Linux is a registered trademark of Linus Torvalds. RedHat is a registered trademark of RedHat, Inc. All other trademarks are the property of their respective owners.

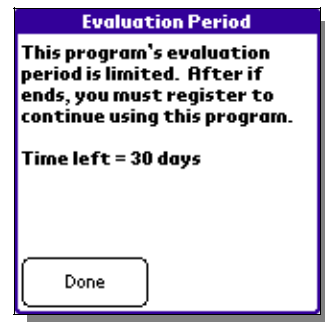
## Software License

The very first time that you launch the program, the License Agreement screen will appear. Before using the software, you must read, understand, and agree to the software license. The software license is available online and is included in the software package downloaded from the Creative Algorithms website.



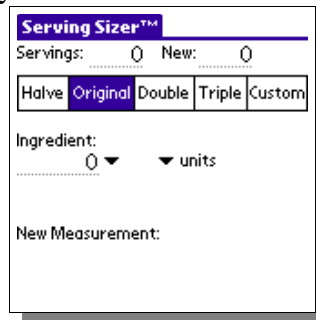
## Trial Period

The program may be evaluated for 30 days from the date of installation. After which, you must purchase a registration key to unlock the program and continue using it. Every time the program is launched, you will be shown the number of evaluation days remaining. This display will not appear once the program is registered.



## Using Serving Sizer™

When you launch the program, you will see the main screen:



The top of the screen are two serving-size fields. The first is the serving size specified in your recipe. The second is the serving size you want.

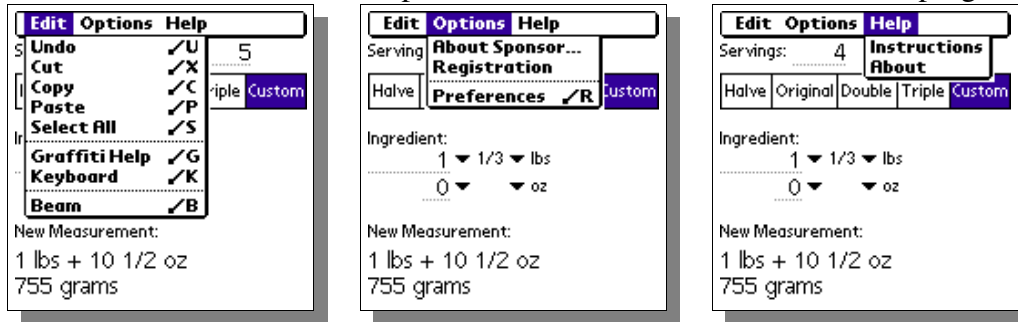
The multiplier pushbuttons (“Halve”, “Original”, “Double”, “Triple”, and “Custom”) below the serving-size fields allow you to quickly change the “New” servings field with some common multiples of the recipe serving size.

Next is the ingredient area. Enter the value of the ingredient you wish to multiply as found in your recipe. If your recipe calls for a fractional measurement, you can use the fraction pop-up list to select a fractional amount. Next, select the units for the ingredient measurement using the units pop-up list. If you have selected a unit for which there are sub-units (pounds, for example, may include ounces), then a secondary measurement area will appear. If your recipe uses sub-measurements instead of fractional measurements, you can complete the secondary field below the main ingredient field. Otherwise, just leave it empty.

The new ingredient measurement appears at the bottom of the screen in both US and metric units (by default). This can be changed with the “Preferences” menu item.

## Drop-down Menu Items

These screen shots illustrate the drop-down menu items accessible from the program:



Undo/Cut/Copy/Paste/SelectAll/Keyboard/Graffiti Help:  
Performs the selected action on the active field.

Beam:

Beams the program to other user's via the infrared port. See the “Sharing the Program” section for more information.

About Sponsor...:

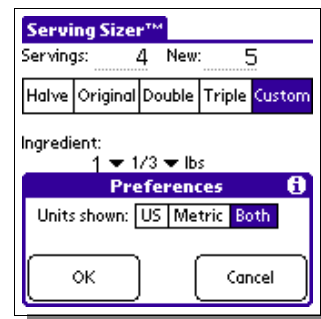
Displays information about the program's sponsor.

Registration...:

If registered, this displays information about to whom the program is registered. Otherwise, it displays instructions for registering the program and accepting the registration key.

Preferences...:

Shows the preferences screen that allows changes to the program's behavior. The “US”, “Metric”, and “Both” pushbuttons select the system of units used to displaying the new ingredients.



Instructions...:

Shows quick tips for using the program.

About...:

Displays the program version.

## Registering

Registration keys may be purchased on-line at <http://www.creativealgorithms.com>.

To begin the registration process, Launch the program. If the program has already expired, you will see the registration screen automatically. Otherwise, you will need to tap the menu button and select the “Registration...” menu item from the drop-down menu. The “Registration Instructions” screen will appear.



Note the PDA HotSync® user name displayed at the bottom. You will need to enter your user name exactly when registering the program. Tap the “Done” button and then the “Cancel” button.

Open the following URL in your Internet browser:  
<http://www.creativealgorithms.com/products.html>.

Then add the program to your shopping cart. Follow the PayPal™ instructions for checking out. Be careful to enter your PDA HotSync® user name exactly when checking out. Otherwise, the registration key will not work. After PayPal™ has confirmed your payment, your registration key will be emailed to you.

Once you have your registration key, launch the program. If the program has already expired, you will see the registration screen automatically. Otherwise, you will need to select “Registration...” from the drop-down menu.

Tap the “Done” button. The registration key entry screen will appear. Enter the code that was emailed to you. Be careful to enter the code exactly as it appears in the email. Tap the “OK” button when you are finished. If you have entered the code correctly you will see the confirmation screen. The program is now unlocked and registered to you.

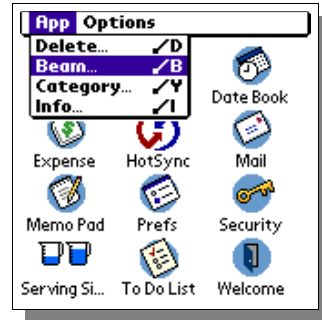


## Sharing the Program

You can share the program with another Palm user either by “beaming” the program to them or by emailing it to them. You may not, however, share any registration key codes or coupon codes with them.

### *Beaming the Program*

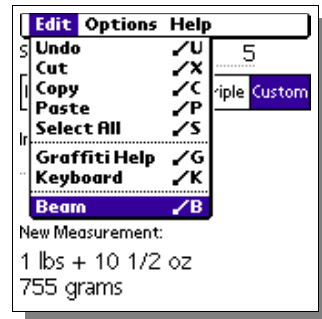
Press the “APPLICATIONS” button on the Palm™ device. The application launcher screen should appear. Tap the menu button to activate the drop-down menu. Select the “Beam” menu item.



Then, select the program from the list of available programs. Follow the manufacturer's instructions for beaming programs.



You can also beam the program while it is running by selecting the “Beam ...” menu item from the drop-down menu:



### *Emailing the Program*

The best way to email the program is to email a link to the program. Copy the following link and paste it into your email:

<http://www.creativealgorithms.com/servingsizer.html>